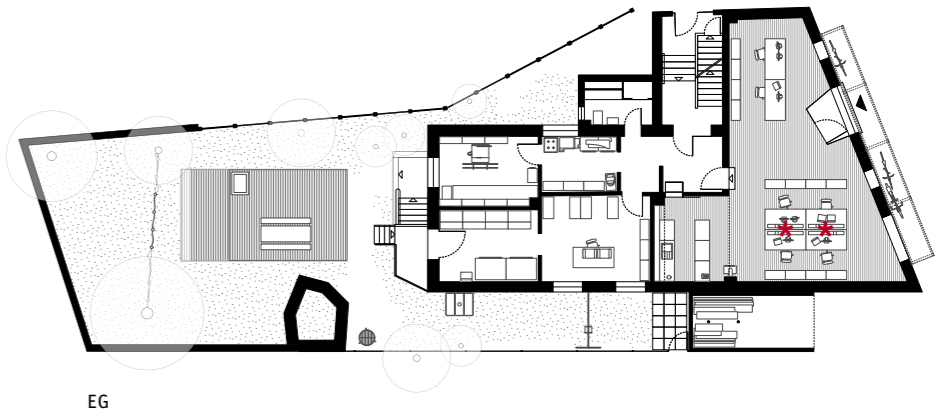




Carrilho da Graça | Calçada Marquês de Abrantes, nº48 2ºdto, 1200-719 Lissabon

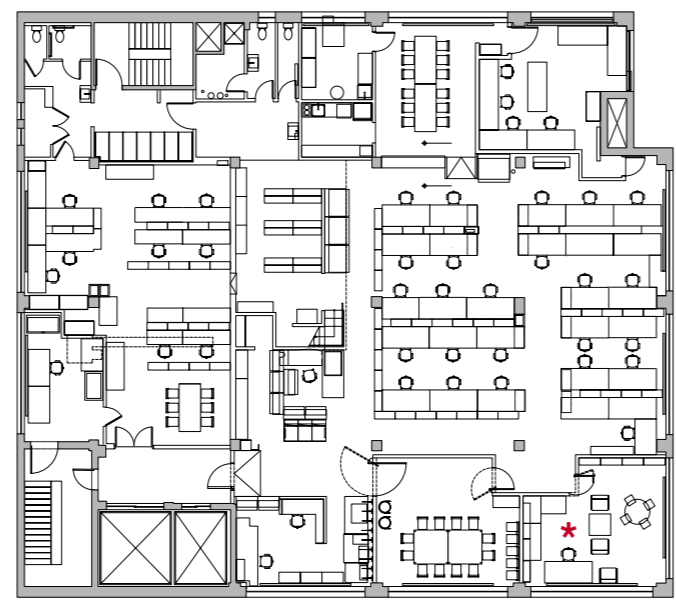


Foto rechts: Marc Günnewig,
links: ©jlcg; Grundrisse im
Maßstab 1:333



modulatorbeat | Hüfferstraße 20,
48149 Münster





11.0G

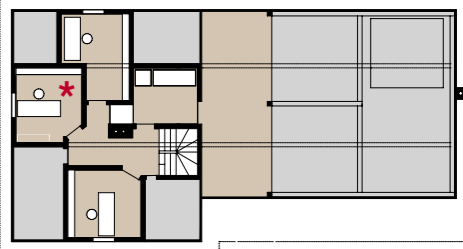
Steven Holl Architects |
450 West 31st Street, New York, NY 10001



EG



OG

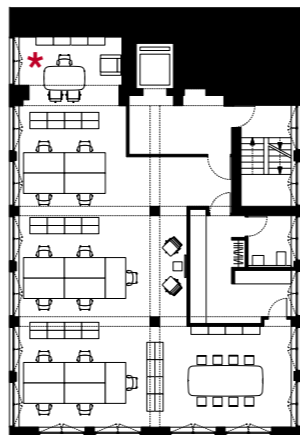


DG

Foto rechts: Petra Rainer,
links: Steven Holl Archi-
tects; Grundrisse im Maßstab
1:333

Marte.Marte Architekten | Totengasse 18,
6833 Weiler (A)

Gernot Schulz Architektur |
Vorgebirgstraße 338, 50969 Köln

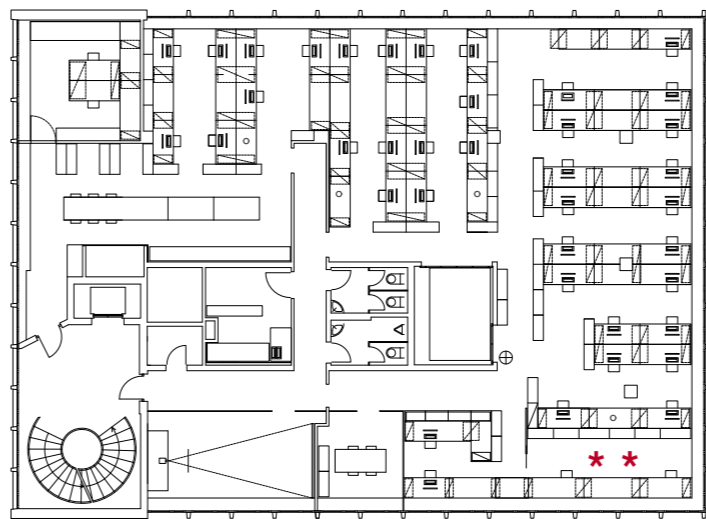


EG

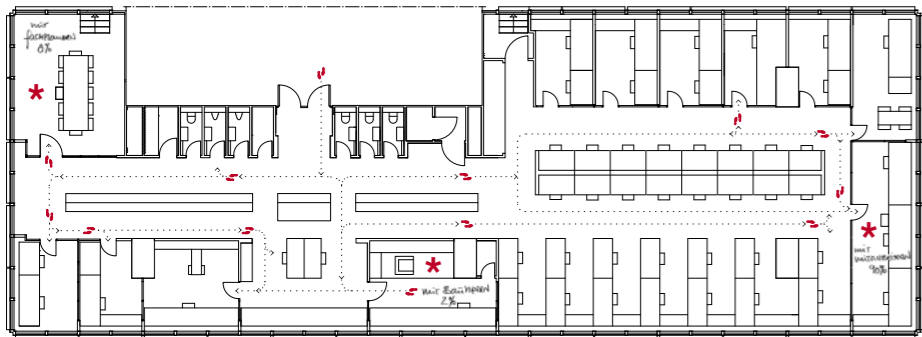
Foto links: Gernot Schulz,
rechts: Jon Naiman;
Grundrisse im Maßstab 1:333



e2a | Hardturmstrasse 76, 8005 Zürich

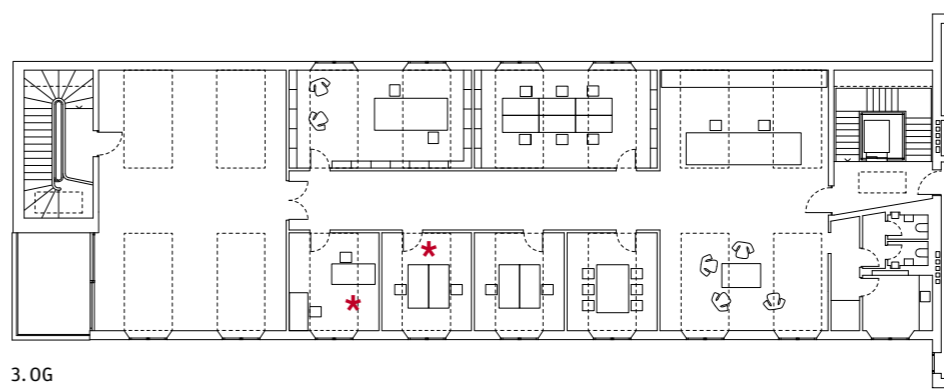


2.0G

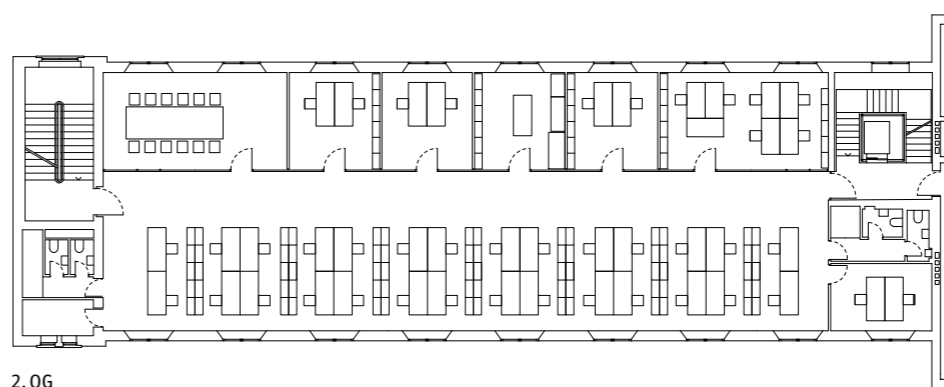


33. OG

Prof. Christoph Mäckler Architekten |
 Platz der Republik 6, 60325 Frankfurt
 am Main



3. OG



2. OG

Sauerbruch Hutton | Lehrter Straße 57,
 10557 Berlin

Foto rechts: Jan Bitter, links:
 Prof. Christoph Mäckler
 Architekten; Grundrisse im
 Maßstab 1:333